

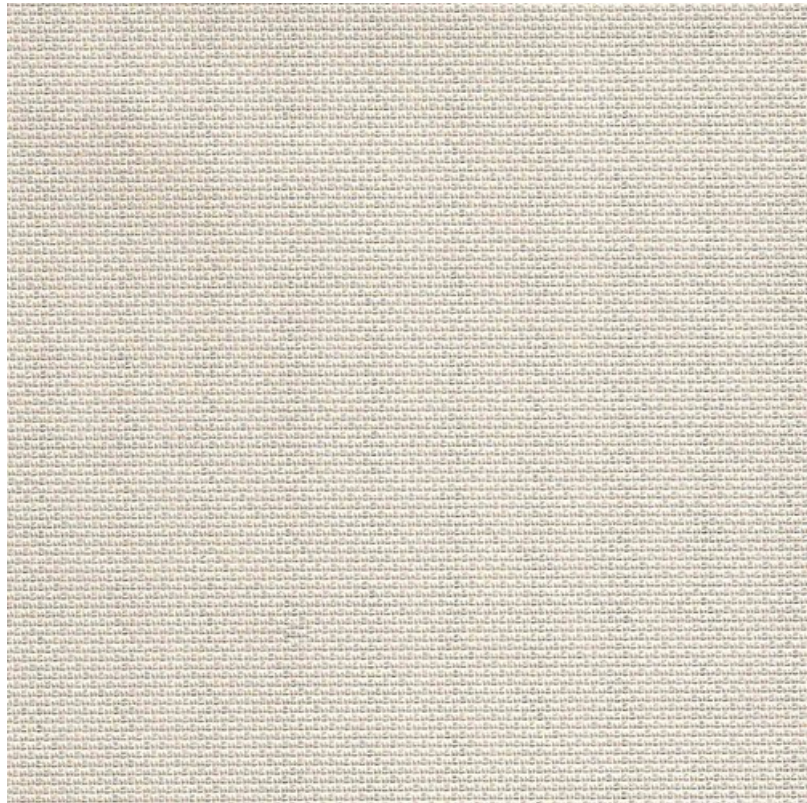
C FOILED

Color: ICE

Collection: CONTRACT/SPECIAL

Design Status: MADE TO ORDER

This is a custom Fabric, minimums apply, samples are limited, please contact your sales rep



PRODUCT SPECIFICATIONS

Recommended Use	Upholstery
Width	54"
Fabric Content	FACE:60%Polyurethane 40%Polyester BACK:65%Polyester 35%Cotton
Fabric Type	Woven
Repeat	0.00" H 0.00" V
Weight	500 g/m ²
Abrasion	Wyzenbeek 50,000
Flammability Codes	CAL TB 117-2013, NFPA 260
ACT	Abrasion Standard: General Use Flammability
Country of Origin	China