

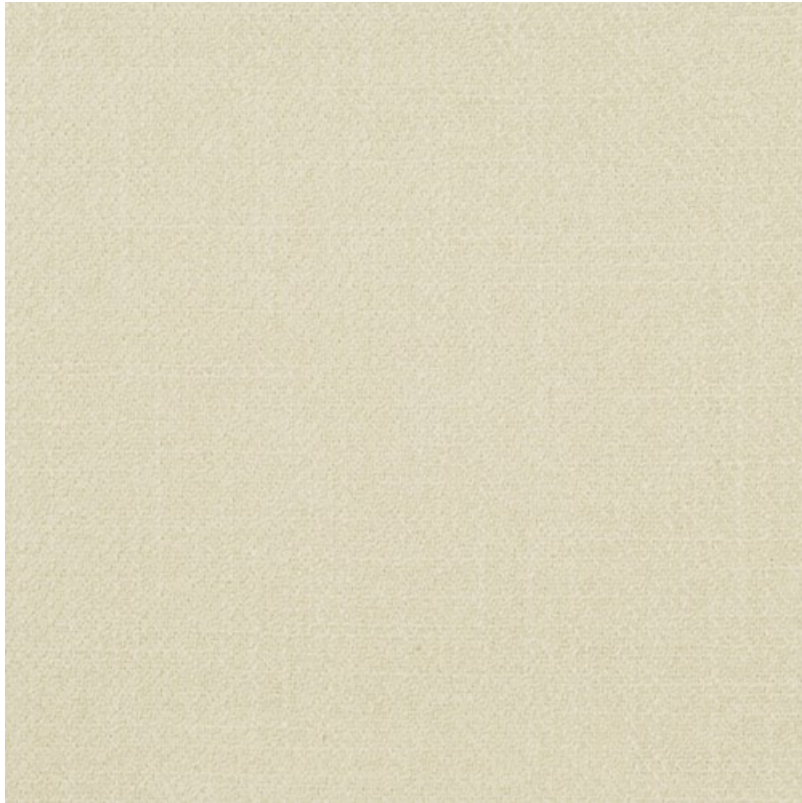
## C PERFORMANCE TWEED

Color: COCONUT

Collection: CONTRACT WOVEN/SPECIAL COLL.

Design Status: IN-LINE

---



### PRODUCT SPECIFICATIONS

Recommended Use	Upholstery, Bedding
Width	55"
Fabric Content	100%Polyester
Finish	Nano-Clean
Fabric Type	Woven
Repeat	0.00" H 0.00" V
Weight	440 g/m <sup>2</sup>
Abrasion	Wyzenbeek 50,000 Martindale 50,000
Flammability Codes	NFPA 260
Selvage	Vertical
ACT	Abrasion Standard: General Use Flammability
Country of Origin	China