

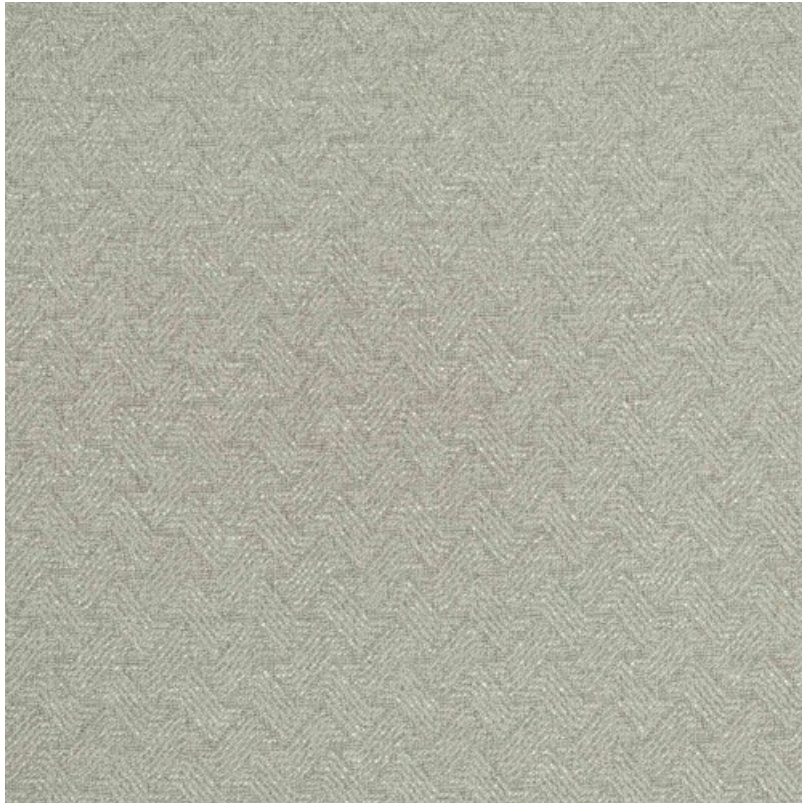
## LA PALMA

Color: CONCRETE

Collection: HIGH SEAS COLLECTION

Design Status: IN-LINE

---



### PRODUCT SPECIFICATIONS

Recommended Use	Drapery, Cruise Ship
Width	59"
Fabric Content	100% Trevira CS Polyester
Finish	Heatset
Fabric Type	Woven
Repeat	1.40" H 1.80" V
Weight	456 g/m <sup>2</sup>
Flammability Codes	CAL TB 117-2013, NFPA 701, BS 5867 (British), EN 13773:2003
Selvage	Vertical
ACT	Flammability
Country of Origin	Turkey